

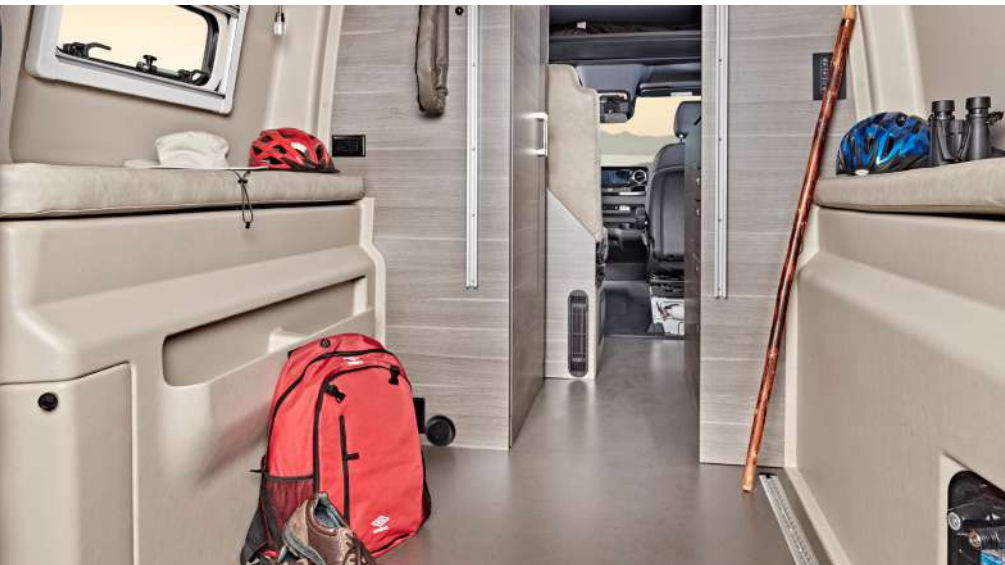
Jayco | Terrain Class B Motorhome

TERRAIN

GO ANYWHERE, EXPERIENCE EVERYTHING



INTERIOR DESIGN





TERRAIN

19Y

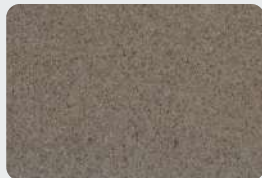


INTERIOR DESIGN

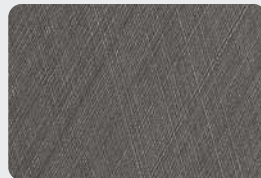
SERENITY



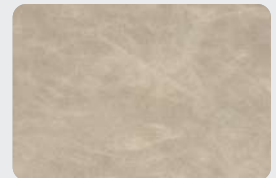
Wood



Floor



Countertop



Main Fabric

EXTERIOR



Standard Exterior



Aztec Partial Paint
(Silver Van Only)



Forest Glade Partial Paint
(Sandstone Van Only)

STANDARDS & OPTIONS

CUSTOMER VALUE PACKAGE

JRIDE®: Koni® shocks, heavy-duty rear stabilizer bar
Carefree armless patio awning with LED light strip and wind sensor
Double roof rack and moveable roof ladder
Front and rear wind deflectors with front LED light bar
Hydronic heating system with LED touchscreen control
48V Coleman®-Mach® 10 air conditioner
Black aluminum wheels with BFGoodrich®
All-Terrain T/A® KO2® tires

DRIVING EQUIPMENT

Mercedes-Benz® Sprinter 2500 4x4 van with 144-in. wheelbase
GVWR- 9,050 lb.
GCWR- 13,930 lb.
3.0L V6 engine with 188HP and 325 ft.-lb. torque
7-speed automatic transmission
220-amp alternator
Daytime running headlamps
Power folding/heated side-view mirrors
5,000-lb. rear hitch receiver with dual 4/7 pin connector
12V chassis battery
24.5-gal. fuel tank (diesel)
5.8-gal DEF Tank
10.25-in. MBUX infotainment center
Power windows and door locks
A/C and adaptive cruise control
Active brake assist
Heated power swivel driver/passenger seats
Smartphone tray with wireless charging
Rain-sensing wiper system
Lane keeping assist
Blind spot assist
Traffic sign assist
Leather-wrapped tilt steering wheel with integrated controls
Cab area privacy shade
Remote keyless entry

EXTERIOR

LED-lit running boards for cab and entry doors
110V exterior outlet
Portable solar plug
LED-lit holding tank valves
Side screen door with magnetic and zipper close-offs
Rear screen door with roll-up and blackout capabilities
Fold-down exterior table
On-board air compressor with front and rear chucks
48V - 210 amp hour smart lithium battery providing 10.2KW hours of power
3500-watt inverter
2nd 48V alternator dedicated to lithium battery
30-amp electrical service with detachable power cord
200 watts of roof-mounted solar panels
Slow charge solar panel for chassis battery
Utility center with water controls and outside hose
Winterization drain system
12V demand water pump
Water filtration system
House battery disconnect switch
Aqua View® SHOWERMISER™ water management system
Heated gray tank (12V pad) with skid plate
Interior-mounted fresh water tank

INTERIOR

Custom-molded, vinyl-wrapped ABS interior wall panels
Soft-touch vinyl ceiling
High-intensity LED ceiling lights
Tecnoform® European-style cabinetry
Tecnoform® pull-out kitchen countertop extension
Pantry with Tecnoform® pull-out extension
Durable rubber flooring
JAYCOMMAND® powered by Firefly
(2) sliding vented windows with cassette shades
Rear dual-pane acrylic window with cassette shades
MaxxAir Deluxe roof vent

(2) additional cab bucket seats with slide and recline features
BOSS® dual-zone radio with Bluetooth®
Collapsible dinette table
3-cu.ft. DC refrigerator
Portable induction cooktop
Stainless-steel sink
110V/USB outlets throughout
Drop-down overhead bed with 750-lb. capacity
Fiberglass side pods create larger sleeping surface
Rear garage under bed with L-track mounts for securing cargo
(2) recessed under-bed storage bags
RAM® Tough-Track™ mounts throughout
All-in-one wet bath with shower and cassette toilet
Removable bamboo shelves in wet bath
Powered roof vent in bathroom
Retractable clothes line in shower
Seatbelts in all seating locations
Driver and passenger airbags
Smoke alarm
Carbon monoxide detector
Fire extinguisher

FLOORPLAN	GVWR (lbs.)	GCWR (lbs.)	FRONT GAWR (lbs.)	REAR GAWR (lbs.)	WHEEL BASE	OVERALL LENGTH	EXTERIOR HEIGHT WITH SATELLITE AND A/C	EXTERIOR WIDTH	INTERIOR HEIGHT	FRESH WATER CAPACITY (gal.)	GRAY WASTE WATER CAPACITY (gal.)	BLACK WASTE WATER CAPACITY (gal.)
19Y	9,050	13,930	4,410	5,360	144"	19' 7"	10' 1"	7' 1"	6' 1"	22	20	4.75

Meet your Jayco Dealer



Scan QR code for specification definitions



Some specs at the time of print may include estimates. For the most updated information, please visit jayco.com/terrain

Jayco, Inc. | P.O. Box 460 | Middlebury, IN 46540

See dealer for further information and prices. All information in this brochure and on www.jayco.com is the latest available at the time of publication approval. Jayco reserves the right to make changes and to discontinue models without notice or obligation. Photography may show optional equipment or props used for decoration purposes only. RVs built for sale in Canada may differ to conform to Canadian codes. JAYCO and the JAYCO BIRD IN FLIGHT are registered trademarks of Jayco, Inc. Printed in USA 11/21 ©2021 Jayco, Inc. 257101

Jayco - Part of the Jayco Family of Companies